

Mediso AnyScan® S

Single-Head and Dual-Head SPECT



AiS

Associated Imaging Services, Inc.

ANYSCAN® S (SINGLE-HEAD & DUAL-HEAD SPECT)

Low Cost of Ownership

Small Footprint

Associated Imaging Services is the exclusive U.S. source in the Midwest for Mediso Medical Imaging System's AnyScan® S, Single-Head and Dual-Head large field-of-view general purpose SPECT imaging system. Mediso, headquartered in Budapest, Hungary is a global leader and supplier of Nuclear Medicine and modern Hybrid Imaging techniques to research institutions and healthcare systems throughout the world. Through their innovative research, development, and manufacturing of pre-clinical and clinical modalities encompassing SPECT, CT, PET, and MRI, Associated Imaging Services and Mediso bring a wealth of experience that allows you to focus on the most important task at hand — patient care.

AnyScan® S Detector Flex Option

Detector "Flex" option provides flexibility to rotate detector heads into numerous positions to include caudal-cephalic tilt, providing practically unlimited detector configurations to accommodate any study and patient type.

AnyScan® S Standard Five Lead ECG Gating System

Five (5) Lead ECG Gating System, R-Wave Trigger ECG built-in with patient cable leads and holder; power trigger signal connect conveniently at the bottom of the AnyScan® S patient bed eliminating cables on the floor.

AnyScan® S Patient Table for WB and Cardiac

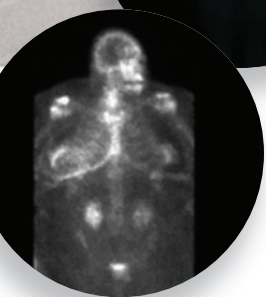
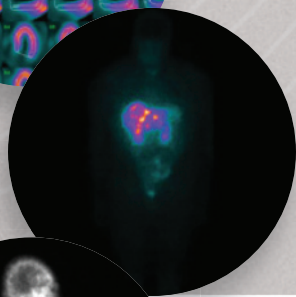
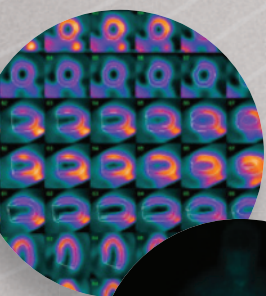
Max Patient Table weight capacity is 505 lbs (229 kg) with motorized vertical movements and motorized whole body motion.

AnyScan® S Total Body Localizer Mode

Unique Total Body acquisition feature allowing quick positioning of follow-up static and/or SPECT acquisition without having to measure distances; select any part of the total body image (superimposed on the screen after acquisition), and the computer automatically calculates and directs the patient table into position.

AnyScan® S Dual Infrared Auto Body Contour

Auto Body Contour feature that allows for the ultimate patient proximity to the collimators, rendering the highest image quality and resolution in Whole Body and SPECT acquisition modes. The dual sensor provides two levels of sensors that automatically adjust the collimator to the contour of the patient.



A unique solution in Molecular Imaging.

No Service Encryption Keys

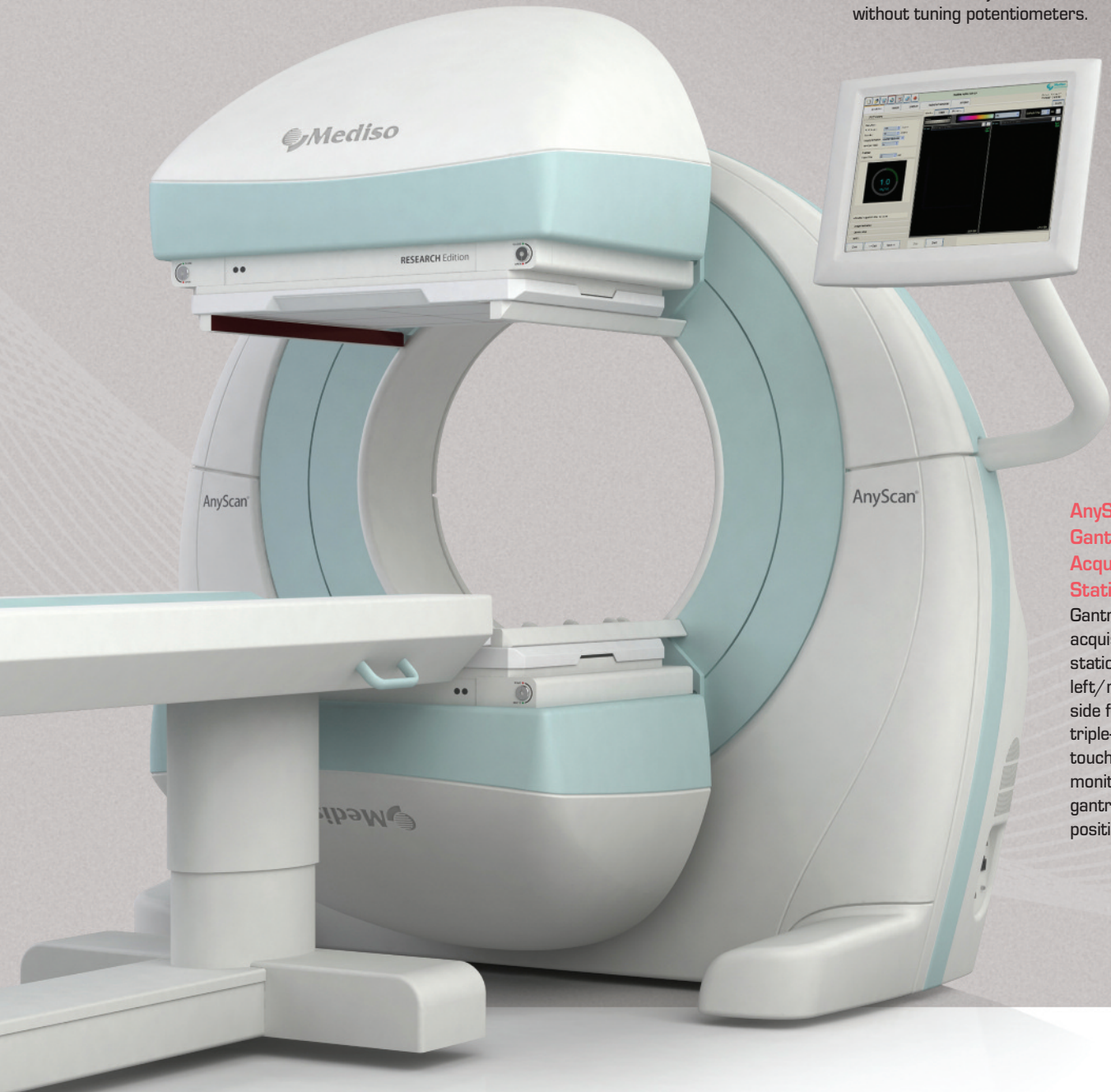
AnyScan® S DICOM 3.0 Compliant

DICOM data transfer and connectivity with multiple platforms and processing workstations which allows the ability to send, receive, print, query and retrieve simultaneously to multiple stations including modality worklists. DICOM compliant with nonproprietary modality capabilities.

Sleek Design

AnyScan® S Detector Electronics

Built on a compact, highly integrated, one-box, and easily serviceable construction without tuning potentiometers.



AnyScan® S Gantry Installed Acquisition Station

Gantry installed acquisition control station with left/right side facing 17" triple-function touch screen monitor for gantry and patient positioning.

"My AnyScan-S camera has been a great addition to my department. It has been very dependable and so easy to learn. AIS has been excellent in their service before and after the sale. I'm so happy with our decision to purchase the AnyScan-S."

**- Mindy Babbitt, CNMT
Lead Nuclear Technologist
Coffeyville Regional Medical Center**

* Additional software packages include Segami Oasis NM Workstation, UltraSPECT® Xpress/Xact.Bone™, and Xpress.Cardiac™ or Xpress3.Cardiac™ with quartercount density, featuring UltraSPECT®'s exclusive wide-beam reconstruction (WBR™) technology. 2015/2017 Cedars-Sinai dedicated cardiac workstation.



SPECIFICATIONS

SPECT GANTRY

- New ergonomic open design gantry
- 180 and 101 or 90 degree variable angle head positions with high precision positioning
- Small footprint robust mechanical design with improved safety factor
- Industry standard CAN connected automation computer
- Pre-programmed robotic gantry motions
- Full automatic motion calibrations
- Maintenance-free mechanical design
- 1139 mm (L); 1714 mm (W); 1632 mm (H); 2100 kg (weight)

SPECT DETECTOR

Two rectangular ultra high resolution, high stability digital detectors with high optical performance

- NaI(Tl) scintillation crystal size: 585 (558) x 470 (418) mm
standard thickness: 9.5 mm optional thickness: 12.5 mm or 15.9 mm
- Photomultipliers: 60 pcs of high quantum efficiency PMTs improved energy resolution and magnetic shielding longterm stability
- Lead shielding thickness: 12-32 mm

SPECT DETECTOR ELECTRONICS

A compact, highly integrated, one box easily serviceable construction without tuning potentiometers

- Computer controlled PMT autotuning processor for fast PMT gain stabilization and adjustment
- 1 ADC/PMT electronics
- High precision preamplifier electronics
- Digital electronics assembled from components of the latest technology
- Active high voltage bleeder with integrated HV module

COLLIMATORS

- LEHS, LEGP, LEHR, LEUHR, MEGP, HEGP collimator pairs and HEPH shipped with dual sided cart
- Dual infrared line auto body contour facility
- 685 mm (L); 562 mm (W); 46-68 mm (H);
70-125 kg (weight)

IMAGING TABLE

- Intelligent CAN connected industry standard interface to gantry
- Horizontal moving range is up to 360 cm
- Height of the patient pallet is variable between 45-85 cm, optionally 95 cm
- Max. 229 kg patient weight (505 lbs)
- Accessories: arm-holder for WB-, arm-head-holder for heart-, head-holder for brain examinations
- 2580 mm (L); 670 mm (W); 850 mm (H); 330 kg (weight)
- Table has the ability to detach completely

NEMA SPECIFICATIONS

- FOV: 530 mm x 390 mm
- Energy range: 40-600 keV
- Intrinsic energy resolution for 99mTc: 9.7%
- Intrinsic Flood Field Uniformity
differential CFOV: 1.9%
integral CFOV: 2.4%
differential UFOV: 2.4%
integral UFOV: 2.9%
- Intrinsic Spatial Resolution: CFOV 3.6 mm
- Intrinsic Spatial Linearity
differential CFOV: 0.18 mm
absolute CFOV: 0.38 mm
differential UFOV: 0.20 mm
absolute CFOV: 0.40 mm
- Max. count rate with full correction: >0.45 Mcps

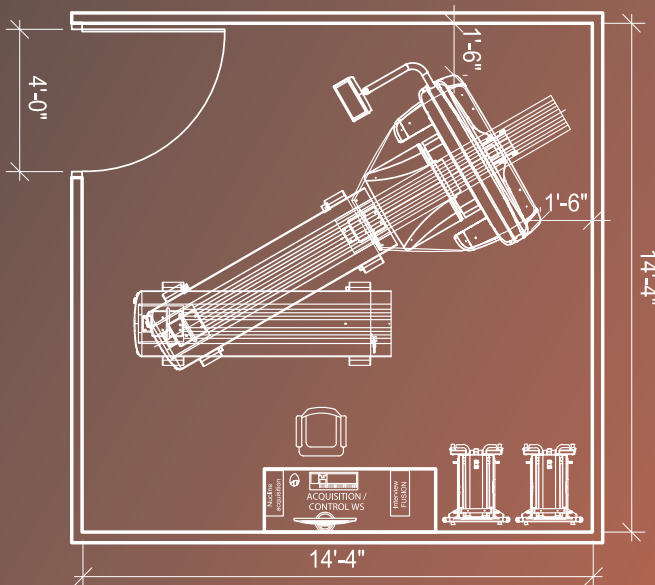
ADDITIONAL COMPONENTS

- Collimator Carts: 750 mm (L); 560 mm (W); 1250 mm (H);
70 kg (weight)
- Power Distribution Unit: 1000 mm (L); 600 mm (W);
1490 mm (H); 450 kg (weight)

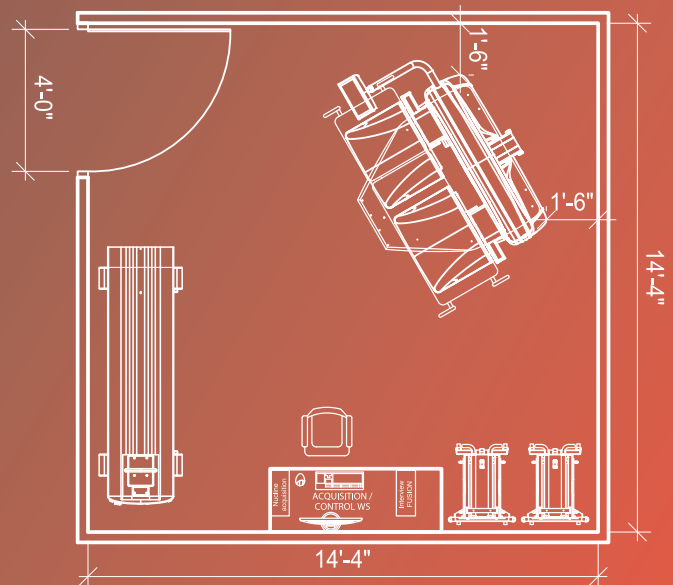
Specifications subject to change without notice.

Mediso AnyScan® S vs. Competitor: Check Our Comparison

	AnyScan® S	Competitor A
Capability to fit in a 15' x 10'.5" space	YES	NO
Capability to fit in a space with 7 ft. ceilings	YES	NO
Costly service encryption keys	NO	YES
Single-Head & Dual-Head SPECT option	YES	YES
Flex option (versatile detector configurations to include caudal-cephalic tilt)	YES	YES
Table has the ability to detach completely (to support gurney/hospital bed imaging)	YES	NO
Table accommodates patients up to 505 lbs.	YES	YES
Total body localizer mode	YES	NO



Mediso AnyScan® S



Mediso AnyScan® S



Associated Imaging Services, Inc.

Molecular Imaging

SALES | SERVICE | PARTS

We appreciate your interest in Associated Imaging Services. Contact us to find out how we can use our expertise with new and reconditioned cameras, service, parts and support to meet all of your molecular imaging needs.

Your exclusive source for the Mediso AnyScan® S Single-Head and Dual-Head SPECT in the Midwest.

www.aismedical.com sales@aismedical.com 800.607.2115



Associated Imaging Services, Inc.